

Guilden Sutton Community Association

# marigold

Spring/Summer 2024

## 'Happening at the Hall'

This March, our Village Hall doors were wide open, inviting everyone to peek at the bustling activities and ongoing enhancements to our hall and Community Association. Sincere thanks to all of those who worked so hard to make it such an enjoyable event.

Regular activities can be found on p15, and a diary of events on p3. There is also a full range of Easter activities and services, which will take place at the end of March. See p13.

As summer approaches, prepare for a splash of creativity with our art exhibition and sale - a whole weekend event and with a pop-up cafe. Then there is the much anticipated village fete - details are on the back page. In addition to the usual fairground attractions, there are the ducks and dogs display and the ever-popular Mr Bubble with his giant bubbles. If you could help in any way with the fete, they are always looking for willing helpers, or you can even set up your own stall!

Several improvements are being planned for the village hall, particularly the roof and the probable installation of solar panels. Such renovations are likely to occur over the summer break. High on the list and much requested by the hall's users is the eventual refurbishment of the toilets.

*....cont'd on p2*



The wall hanging on the left shows some of the clubs and societies in the village, many of whom use the hall.

Each square has been designed and made by the groups and you can see it in the foyer of the village hall.

There is a larger version on the Guilden Sutton website.

# **Guilden Sutton Community Association**

*... cont'd from page 1*

New activities include a ukulele group, a singing group, an adult dance class and the exciting Pop-up Play village for 0-8-year-olds, which takes place every other Friday during term time.

Talkabout has now changed to more informal meetings with the members choosing the subjects and other activities. See p9.

The Pre-School is in the process of setting up a fund-raising activity - the 100 Club. A regular subscription will allow entry to the monthly prize draw, with proceeds going towards the long-running and highly successful Pre-School. Full details will be available shortly on all the usual social media channels.

The Community Association was also excited to see the activity trail appear at the back of the hall. Thank you, Parish Council, for commissioning it so quickly. Very tempting for us grown-ups as well - but we mustn't. Perhaps an indoor climbing wall at the far end of the hall itself!

With the weather warming up, we expect to see a flurry of activity at Fox Meadow and Hooks Wood. The latter has been very muddy, and as soon as the ground dries out, the Green Space group will organise tidying activities, further development and an activity day.

On Wed 15 May come along to the Community Association AGM where residents will have the chance to comment, put forward ideas and vote.

## **Join the Community Association**

As a resident of Guilden Sutton, you are welcome to register as a member of the Community Association. It's all FREE!

Membership has a number of advantages including discounts on hall hire, updates on events via email and voting at Community Association AGMs. There are no obligations.

Why not join NOW using the on-line joining form on the GS website [www.guildensutton.org.uk](http://www.guildensutton.org.uk)

## **Guilden Sutton Old School House Trust April deadline for grant applications**

Grants for current or former pupils of GS Primary School. Applications should be submitted by 30 April for consideration in May. Application forms/more information are available on the Guilden Sutton website or from Peter Reid (Email: [pgeddesr@gmail.com](mailto:pgeddesr@gmail.com); Tel. 01244 300985).

## Diary of events

### March

Easter services	29 - 31	See p13
-----------------	---------	---------

### April

Annual Parish meeting	Wed 3	19:00 - 19:30	Village Hall
Parish Council meeting	Wed 3	19:30 - 21:30	Village Hall

### May

Parish Council meeting	Wed 1	19:30 - 21:30	Village Hall
Community Assoc AGM	Wed 15	Start 20:00	Village Hall

### June

Parish Council forum	Wed 5	19:00 - 19:30	Village Hall
Parish Council meeting	Wed 5	19:30 - 21:30	Village Hall
Art exhibition	Sat 15/Sun 16	10:00 - 17:00	Village Hall

### July

Parish Council - communications forum	Wed 17	19:00 - 19:30	Village Hall
Parish Council meeting	Wed 17	19:30 - 21:30	Village Hall
Fete	Sat 13	13:00 - 16:30	School field

## Art exhibition

In June, we will be holding a weekend of art at the Village Hall. This will be a great opportunity for local artists to showcase their creative talents by exhibiting and/or selling their work.

One such artist, Peter Reid, has started the ball rolling with his countryside paintings as seen from his studio window - one for each month of the year. You can see the originals in the Community Room of the Village Hall or find them and more of Peter's art on the website.

The Cestrian art group will be there in force and there will be a display by the primary school children. There will also be a pop-up cafe.

If you would like to show or sell your work and need more information, please contact Peter at [pgeddesr@gmail.com](mailto:pgeddesr@gmail.com). M:07738 158747



## Parent and Toddler group

The Parent and Toddler Group meets term-time only, every Tuesday morning between 10.30 and 12.00 in the Village Hall. We charge £2 per family.

Parents, grandparents and childminders are all welcome to join our friendly group. We currently have children ranging from a few months old to preschoolers, everyone is welcome!

We have a wide selection of toys and play equipment. Our ride-on toys are always very popular with the older children. The babies enjoy socialising on the play mats and are able to explore new toys in a safe environment. Painting, play dough and other craft activities are carried out each week, sometimes themed on seasonal or festive events that take place throughout the year. Children enjoy a healthy snack and drink and grown-ups have a drink and a biscuit too.



**Please come along on Tuesdays or email Emily for more information** [emilyjagalvin@hotmail.com](mailto:emilyjagalvin@hotmail.com)

**HELP PLEASE** - the group is looking for help with its organisation. We are an informal group and if you feel you could offer assistance, please email Emily or just drop in on a Tuesday to find out more.

Further information, photos and what we get up to can be found on our Facebook page by searching 'Guilden Sutton Parent & Toddler Group'.

## Stardust drama

Drama classes for children aged 5-12 run on Friday afternoons.  
5-8 year olds at 3:45pm, 8-12 year olds at 4:55pm.

Fun-filled classes with drama games, improvisations, script reading, character work and performances helping inspire confidence, creativity and teamwork in children.

Run by professional actress, Stephanie Pinder  
The first class is **free** for new young actors

[www.stardustdrama.co.uk](http://www.stardustdrama.co.uk)

Email: [stephchambers99@aol.com](mailto:stephchambers99@aol.com)

M: 07739 104147



## Tumble Tots

Designed to develop children's physical skills of agility, balance, co-ordination and climbing, the programme is structured to develop children's positive personality traits including confidence and self-esteem.

Mondays in the Village Hall

Call Paul Johnson on 07873 114596  
or visit [www.tumbletots.com](http://www.tumbletots.com)



## Guilden Sutton Preschool

Guilden Sutton Preschool is a lovely local Preschool in the heart of Guilden Sutton. Our child-centered approach allows your little person to grow, learn and develop through play and creativity. We provide a safe, inclusive, nurturing environment for all and pride ourselves in giving our children the confidence and skills ready for their next big adventure! We also have strong community links with the local school and church.

From April 2024 - working families with children aged 2, may be eligible for 15 hours of government childcare funding. Please visit [www.childcarechoices.gov.uk](http://www.childcarechoices.gov.uk) to see if you are eligible and for more information on how to apply.



Our Facebook page is a great way to see all of the wonderful activities we get up to!

We have limited spaces available for the Summer Term - contact us now to secure your child's place!! Places for September 2024 are also available, email [managergsps@gmail.com](mailto:managergsps@gmail.com) or call **07717 942843** to arrange a visit. We are open Monday-Friday from 9am-3pm during term times.

As a charity-funded preschool, Guilden Sutton Preschool relies on fundraising to continue to deliver a child-led, individual experience for our families. 2024 sees the launch of the **100 Club**, which will generate up to £3,000 in fundraising and pay out £3,000 in prizes. Your support will make a huge difference and enable our continued development - all for only £5 per month.

Visit [www.guildensuttonpreschool.org](http://www.guildensuttonpreschool.org) to download an application form and view the rules. For more information, please email Richard, the Preschool chairperson, at [chairgsps@gmail.com](mailto:chairgsps@gmail.com). The first draw is on 1 May. Good luck!

## 1st Guilden Sutton Scout Group

Meeting and activities at the Village Hall

**Beavers (6-8yrs)** Mondays 17:45 - 19:00

**Cubs (8-10.5yrs)** Mondays 18:30 - 20:00

**Scouts (10.5-14yrs)** Fridays: 19:30 - 21:00

For more info email: [1stguildensutton@chesterscouts.org.uk](mailto:1stguildensutton@chesterscouts.org.uk)



## Pop-up Play Village - NEW

Pop Up Play Village is all about making child's play of the world, inspiring and nurturing young minds through role play. Our village is child led and open plan popping up to provide a safe and inviting space in which children and their parents can unleash their creativity and let their imaginations go wild.

Pop Up Play village is made up of role play areas. The play sessions have been specially designed to help children learn and develop through play. Each of the role play areas provides children with the tools to develop socially and learn more about themselves, their peers and the world we live in. And whilst this is about education and development, it is also about having lots of fun!

As well as role play sessions, we run parties, early years and school sessions (with planning to support the EYFS, KS1 & KS2 Curriculums); wedding entertainment and pop up for events, festivals and fayres.

Our play sessions run fortnightly from 11am - 12.15pm, dates can be found on Facebook and Instagram (@popupplayvillagechester). They are PAYG and bookable online via the website below.

We have our special Easter Themed play session on Good Friday (29<sup>th</sup> March) at 11am.

For more information please contact Kelly at any of the following:

M: 07482268794

Email: [chester@popupplayvillage.co.uk](mailto:chester@popupplayvillage.co.uk)

Website: [www.popupplayvillage.co.uk](http://www.popupplayvillage.co.uk)

## **Pilates - St John's Church Hall**

Increase strength. Improve your balance

Classic floor mat classes - every Wednesday:

Level One 7pm      Level Two 8pm

For more information ring or text Clare on 07917 116576

Email: cefarrall@mac.com

## **Yoga - friendly classes, open to all**

Yoga classes take place at the Village Hall on Tuesday evenings 6.30 until 7.45pm.

Regular yoga practice improves energy levels, posture, flexibility, strength, agility, endurance and balance; giving you a greater ability to move. It is an anti-ageing tool.

Yoga works on the inside as well as the outside, strengthening and cleansing the cardiovascular and digestive system, fortifying the immune system, refreshing and stimulating every organ and gland, balancing the nervous system and stilling the chattering mind – so powerful in both mental and physical health.

For more information please call or text Aly 07801 575773 email alygwatkin@outlook.com or visit [www.yogaly.co.uk](http://www.yogaly.co.uk)

## **Exercise and Nutrition**

### **HEALTHY ACTIVE LIFESTYLE (H.A.L.) CLUB**

If you are looking to become a bit more active and meet some new friends, then come along to HAL this Spring and Summer.

We meet every Thursday morning in the Village Hall (9.15 – 10.30am). New members of all ages are always welcome. Our weekly workout is complemented by a lively discussion on healthy eating & lifestyle topics. We are a very friendly bunch and everyone really enjoys our weekly get togethers.

All fitness levels are catered for, with a range of high and low impact activities. The sessions are pay as you go, so you can try a session without a long-term commitment. It's just £7 per session, including refreshments. So why not come along and join us?

For more information please contact Su Baird on 07771 951427 or su.baird@btopenworld.com

Looking for something outdoors? Then contact Su about Fit Club Chester's outdoor workouts in Hoole on Wednesday evening / Saturday morning

## Mobile Library Service

The easy-access library bus will be visiting the village on **MONDAYS**

22 April 2024

13 May 2024

3 June 2024

24 June 2024

15 July 2024

Moorcroft Crescent 10:20-10:35. Village Hall car park 10:50-12:20

A wide range of books is on offer including fact, fiction, reference and children's books, new publications, large print and talking books, and an excellent Information Service. For further info and future dates visit the CwaC website and search for Mobile Library

## French classes with Corinne St John's Church Hall, Church Lane

Fun, friendly and relaxed conversation classes

Morning classes 10-12pm. Afternoon 1-3pm

French level 2, beginners plus, Tuesday afternoon

French level 3, intermediate, Monday morning

French level 5, advanced, Tuesday morning

People can join this year although there are not that many weeks left. A new session of classes will begin in September

For further information, please contact Corinne:  
csdloison@outlook.com



## Badminton Club

The Badminton Club plays from September until the end of April in the Village Hall.

Monday evening from 8.00pm - 10.00pm

Tuesday evening from 8.00pm - 9.00pm (or later depending on number of players)

For information, please contact Peter Evans on 300890.

## Ladies Badminton

Ladies badminton Village Hall Tuesday 09:15 - 10:15

The club is currently running at capacity but if you would like further information please contact Siân Hancock Email: [sian-hancock@live.co.uk](mailto:sian-hancock@live.co.uk)





## Talkabout

At our final meeting in Talkabout's present format, we were entertained with a lively talk by the ever popular Jean Finney, about her adventures as a cruise ship entertainer. It was a lovely evening and we all enjoyed the wine too!

As you all know from now on we are moving into 'Talkabout Lite' mode.

This is a big transition for the group after almost 20 years and means there will be no fixed programme of monthly meetings. We now have only 2 committee members, Joan and Vivian, who will arrange occasional meetings and deal with administration.

We are now inviting the Talkabout members to help lead and organise meetings and events on a less formal basis. Although some ideas have already been suggested, obviously we all need to put on our thinking caps to enable Talkabout Lite to be a success.

Any suggestions can be sent to the committee who are happy to liaise re coordination of dates and notifying members.

If you wish to find out more I've included contact numbers for the committee members:

Joan – 07768 093624 Vivian—300678

Finally I would like to say a big thank you to all those members who have served on the committee over the years and have made Talkabout such a huge success. Val.

## Guilden Sutton History Group

The History Group has an extensive collection of photographic albums, articles, maps and general information about Guilden Sutton. We are aware that a large collection of additional information exists in the general community.

If you have any old photographs or articles about Guilden Sutton or Pipers Ash or would be interested in helping with assembling this information, please get in touch. Here's a specific message from Sue Gray, who co-ordinates the project:

*'I am trying to contact any one who has photographs or information about members of the armed forces from Guilden Sutton who fought in the two World Wars.*

*We have a number of pictures that were collected by Arthur Willis but not all, it would be good to make our records more complete. At Remembrance Sunday we had an extra photograph brought along.*

*I would very much like a copy of this, and any information about the person in the photograph. Please contact me, Sue, on 300754.*

*Thank You'*

## Circle dancing

Dancing connects you with others, lifts your mood and develops co-ordination and memory. It feeds your mind, body and soul.

Holding hands and dancing with others in a circle pattern is a very old tradition in countries like Greece, particularly on occasions such as weddings, where everyone is included and you don't need a partner.

In our Wednesday afternoon circle dance group (Village Hall, 2.30 - 4pm), we do, in the main, fairly gentle community dances, with repeated step patterns to beautiful world music. Some of the rhythms are quite unusual and keep us on our toes! We embrace a wide variety of dances and cultures, and express many moods. We always end the session with more meditative dances, which bring a feeling of peace. We always have a lot of fun along the way.



We are an established and friendly group, and will offer you a warm, open welcome.

If you would like try us, please contact Dee and Nawal on 01244 679100, or email [nawal.dee@gmail.com](mailto:nawal.dee@gmail.com)

## Cestrian Art group

Cestrian Art Group meets in St John's Church Hall in Church Lane every Wednesday 10.30am till 3-30pm during term time.

Members' abilities range from absolute beginners to experienced artists who work together in a relaxed and informal atmosphere.

We work individually on our own projects using pastel, acrylic, watercolour or pencil.

Members usually take packed lunches, and teas and coffees are available throughout the day. Why not drop in on a Wednesday to see what we are doing.



Most members will be displaying and selling some of their work at the Summer Art Exhibition to be held in the village hall on 15 & 16 June. Come and meet the artists, have a chat and show your support.

To know more, contact Chris Morley Tel: 07746 925804  
Email: [chrstnmorley@gmail.com](mailto:chrstnmorley@gmail.com)

## Play Ukulele

The Ukulele group meet up on Tuesday evenings, 8pm to 9pm at the Village Hall.



The group is for anyone who wants to play, or start playing, the ukulele. Even if you've never learned a musical instrument before, if you'd like to give it a go just get in touch, or drop in on a Tuesday evening.

For more information, or if you have any questions please email GSCA ([community@guildensutton.org.uk](mailto:community@guildensutton.org.uk)), or telephone Sarah on 07985 455824

## Guilden Sutton Sings!

Wednesdays 1.15 to 2.45pm at the village hall.

We are a friendly and informal singing group, with a focus on singing for fun and wellbeing.

All voices are welcome - young, old, beginner or experienced - so if you would like to sing, learn new songs, and meet new people, why not come along one week and try it out? Sessions are £5 per week, including refreshments and there's no long term commitment - just turn up and sing.

For more information contact Sarah by email: [sarahjessopmusic@runbox.com](mailto:sarahjessopmusic@runbox.com) or telephone: 07985 455824



## Nina Gaskill School of Dance

**FUN, CREATIVE AND INCLUSIVE DANCE CLASSES**

Children's RAD Ballet, ISTD Modern, Jazz and Tap.  
Fridays and Saturdays in the Village Hall

**Adults class Mondays 19:00 - 20:00 - NEW CLASS**

Qualified, Registered Teacher, Nina Gaskill RAD dip, DDE, AISTD  
Contact Nina for information [nina\\_dance@btinternet.com](mailto:nina_dance@btinternet.com)  
Facebook: NinaGaskillDance

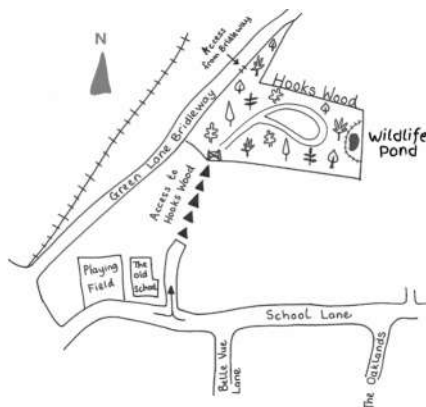
## Green Space and Hooks Wood

Hooks Wood, our community woodland, is open to everyone for walking, enjoying nature, exploring and playing.

Hopefully the mud will soon harden and it will be time for some much needed tidying and development. If anyone wants to remove the excessive growth of grass in the tubes around the trees while in the area - feel free to do so as the grass deprives the trees of water.

Hooks Wood is a lovely peaceful place to spend time and there's always something new to see.

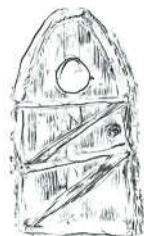
Visit: [www.gsgreenspace.org.uk](http://www.gsgreenspace.org.uk)



## Wildflower area

Fox Meadow was the most popular choice for a name for the wildflower garden. Thank you to everyone who voted. The Parish Council is still in discussion with CWaC regarding the licence which will transfer responsibility for the land from CWaC to the Parish Council for 15 years.

Once the licence is signed, Spacehive will transfer the money we raised through Kickstart and we will be ordering a noticeboard and planters. We really hope this will happen soon as it is now two years since the project was first suggested.



## Cafe at St John's Church Hall

St John's 'Cafe in the Church Hall' is open from 10am to midday on the second and fourth Thursdays of most months. We serve a variety of beverages, home baked cakes, toasted tea cakes etc in the warm and light-filled environment of the church hall in Church Lane.

We are a registered 'Warm Space.' There is a play area for children. Our prices are very reasonable with all drink refills free - we are 'Costa Not-a-Lot.' It's a great place to meet up for a chat. If you've not been before - give us a try!

April	11	25	May	9	23
June	13	27	July	11	25
Aug	8	22			



# St John's Church, Guilden Sutton

[www.guildensutton-plemstallchurch](http://www.guildensutton-plemstallchurch)



Sunday services are shared with St Peter's, Plemstall. Sunday services in St John's Church are 10.30am service with Holy Communion on the 4th Sunday of the month and 7pm reflective and informal communion service on the 3rd Sunday of the month.



## Messy Church

*Free breakfast, children's activities, toddler and baby area and a short celebration time together in the school hall. Meet: 10:30*

Guilden Sutton  
School  
23 June

Mickle Trafford  
Village Hall  
19 May



## Cafe Church and Cafe Kids

*Coffee, croissants, time to chat and games for children. A short, informal service often with video clips - Children can go out for a session in the Marigold room next door with Cafe Kids or stay in the main hall. Meet: 10:00 for 10:30*

Guilden Sutton  
Village Hall  
14 April  
5 May  
2 June  
7 July



## The Woolly Bunch

*Enjoy knitting or crochet or want to learn? Meet on the first and third Thursdays of most months from 10.15 - 12 noon Please contact Suzanne Cromwell 07906 157755 for more details*

St Johns Church  
Hall  
4 & 18 April  
2 & 16 May  
6 & 20 June



## Housegroups

*Meet in groups of 6-8 people where you can deepen friendships, laugh and explore living out faith in the everyday*

Contact Heather  
on the number  
below

## Easter Services

St Peter's	Maundy Thursday	28 March 19:30
St John's	Good Friday	29 March 10:30
St John's	Easter Sunday, Sunrise service at the Cross, St John's	31 March 07:30
St Peter's	Easter Sunday Celebration	31 March 10:30

For more information contact **Heather Carty** on **07484 515812**  
Email: [rector@guildensutton-plemstall.church](mailto:rector@guildensutton-plemstall.church)

## **Holding a party or an event?**

Book the Village Hall. The hall and its rooms are available for private bookings. You can view the scheduled activities and see what rooms in the Hall are available at:

[www.guildensutton.org.uk/Village\\_hall\\_booking.html](http://www.guildensutton.org.uk/Village_hall_booking.html)

Booking information is on that page but you can also speak to Stephanie, the booking secretary, on 07739 104147

## **Guilden Sutton Community Association**

Charity no: 1201751

Chair: Robin Norrie

Treasurer: Sarah Connolly

Secretary: Matthew Peacock (Email: [matthew@guildensutton.org.uk](mailto:matthew@guildensutton.org.uk))

Trustees: Sarah Connolly, Vivian Downing, Peter Evans, Alice Hay, Derek Hughes, Sarah Jessop, Brian Lewin, Robin Norrie, Matthew Peacock.

## **Parish Council**

Derek Hughes, (Chair), [derek.hughes@guildensutton.org.uk](mailto:derek.hughes@guildensutton.org.uk)

Members: Sue Ringstead (Vice chair), Alan Davis, Mel Littlewood, Trisha Paterson, David Walters, Rachael Whelan, Victoria Roberts.

Clerk: Michael Roberts,

Tel: 07783 012582, Email: [clerk@guildensuttonpc.co.uk](mailto:clerk@guildensuttonpc.co.uk)

Parish Council meetings:

3 April (inc Annual Parish meeting at 7pm), 1 May , 5 June, 17 July

7.30pm Village Hall

If you would like to speak to a councillor, please contact the Parish Clerk in the first instance. Two Councillors will be available at a surgery outside the Post Office 10:00 - 10:30 on the Saturday preceding each Council meeting. There is public speaking time at the start of each council meeting where members of the public may address the council.

**Parish Council website:** [guildensuttonpc.co.uk](http://guildensuttonpc.co.uk)

## **Cheshire West and Chester Council**

Councillors covering the Guilden Sutton area (Goway Rural ward)

Margaret Parker Email: [margaret.parker@cheshirewestandchester.gov.uk](mailto:margaret.parker@cheshirewestandchester.gov.uk)

Graham Heatley Email: [graham.heatley@cheshirewestandchester.gov.uk](mailto:graham.heatley@cheshirewestandchester.gov.uk)

## Regular events in the Village

<b>Mondays - Fridays</b>			<b>Page</b>
Pre-school	9:00 - 15:00	Village Hall	5
<b>Mondays</b>			
Tumble Tots	9:30 - 13:00	Village Hall	4
French Classes	10:00 - 12:00	<u>Church Hall</u>	8
Beavers	17:45 - 19:00	Village Hall	6
Cubs	18:30 - 20:00	Village Hall	6
Nina Gaskill Dance (Adults)	19:00 - 20:00	Village Hall	11
Badminton Club	20:00 - 22:00	Village Hall	8
<b>Tuesdays</b>			
Ladies Badminton	9:15 - 10:15	Village Hall	8
Parents and Toddlers	10:30 - 12:00	Village Hall	5
French Classes	10am and 1pm	<u>Church Hall</u>	8
Yoga	18:30 - 19:45	Village Hall	7
GS Badminton Club	20:00 - 21:00	Village Hall	8
Ukulele group	20:00 - 21:00	Village Hall	11
<b>Wednesdays</b>			
Cestrian Art Group	10:30 - 15:30	<u>Church Hall</u>	10
Guilden Sutton Sings	13:15 - 14:45	Village Hall	11
Circle Dancing	14:30 - 16:00	Village Hall	10
Pilates	19:00 - 21:00	<u>Church Hall</u>	7
<b>Thursdays</b>			
HAL	9:15 - 10:30	Village Hall	7
<b>Fridays</b>			
Stardust drama	15:45 - 17:45	Village Hall	4
Nina Gaskill Dance	16:30 - 18:30	Village Hall	11
Scouts	19:30 - 21:00	Village Hall	6
Pop-up Play Village	11:00 - 12:15	Village Hall	6
<b>Saturdays</b>			
Nina Gaskill Dance	9:00 - 17:00	Village Hall	11

<https://www.guildensutton.org.uk>

Printed by Devaprint, Sutton House, Guilden Sutton Lane,  
Guilden Sutton, CH3 7EY

# Guilden Sutton Village fete 2024

Planning is in full swing. We are currently gathering raffle prizes for the event so if you or someone you know can help, please get in contact with Steph at [Stephchambers99@aol.com](mailto:Stephchambers99@aol.com)

Additionally, we can't put on the fete without volunteers to help set up the field on Friday evening and Saturday morning before the fete. To help, please contact [mel.littlewood@guildensuttonpc.co.uk](mailto:mel.littlewood@guildensuttonpc.co.uk).

The pre-loved teddy tombola was a huge success last year, and we are already collecting donations. Chris in the Post Office has kindly said she will help with this, so please drop them off with her - just teddies at this stage. We will put a call out for other donations (toys, books, tombola etc.) nearer the time.

**GUILDEN SUTTON  
VILLAGE FETE**

**Saturday 13th July  
1pm - 4:30pm**

GUILDEN SUTTON PRIMARY SCHOOL, ARROWCROFT ROAD

**ADULTS £2  
CHILDREN 50P**

**JOIN US FOR LOTS OF FUN!**

- ducks and dogs display
- bouncy castle • donkey rides
- tombola • giant bubbles
- fairground rides •
- trampolines • balloons
- live music • dance show
- face painting • games
- food • beer tent
- and much more!

For more information visit: [www.guildensutton.org.uk](http://www.guildensutton.org.uk)  
registered charity no 1201751